

*Technical Information*

**DIABIT**  
ROCK DRILLING TOOLS

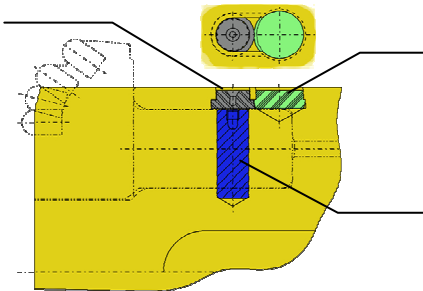
*New Pin Retaining system (NPR) for SMB*

REF.	CU08-009E
DATE	2008/5/26

**PATENT PENDING**

Parts List

②Washer



③Stopper

①Pin

How to set up



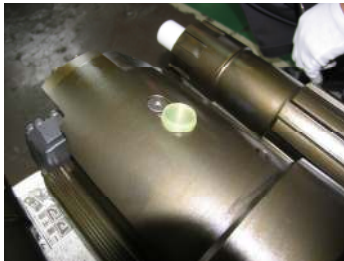
1) Insert the pin in the hole. In case that the pin has a thread at the end of it, insert it as a thread face toward outside.



2) Put the washer in the bigger hole beside the pin as the small diameter portion of it face toward outside.



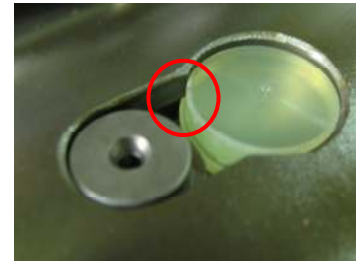
3) Slide the washer forward the pin along the groove up to being on the pin.



4) Put the stopper on the bigger hole as the small diameter portion of it face toward outside.



5) Insert the stopper in the bigger hole using tools like a hammer.



6) Confirm that the brim portion of the stopper is held in the groove.

In case of disassembly; the stopper is pulled out by flat screwdriver or the like, after that take a washer then a pin off.

Notice

- 1) In case that the washer was worn out as shown Fig. 1, please change it for brand-new one.
- 2) In case that the stopper was worn out due to contact with the washer as shown Fig. 2, please re-set it up to change the contact portion.
- 3) In case that the stopper lost elasticity due to aged deterioration, please change it for brand-new one.
- 4) Please refer to the OPERATION MANUAL with regard to other general notes for SMB.



Fig. 1



Fig. 2